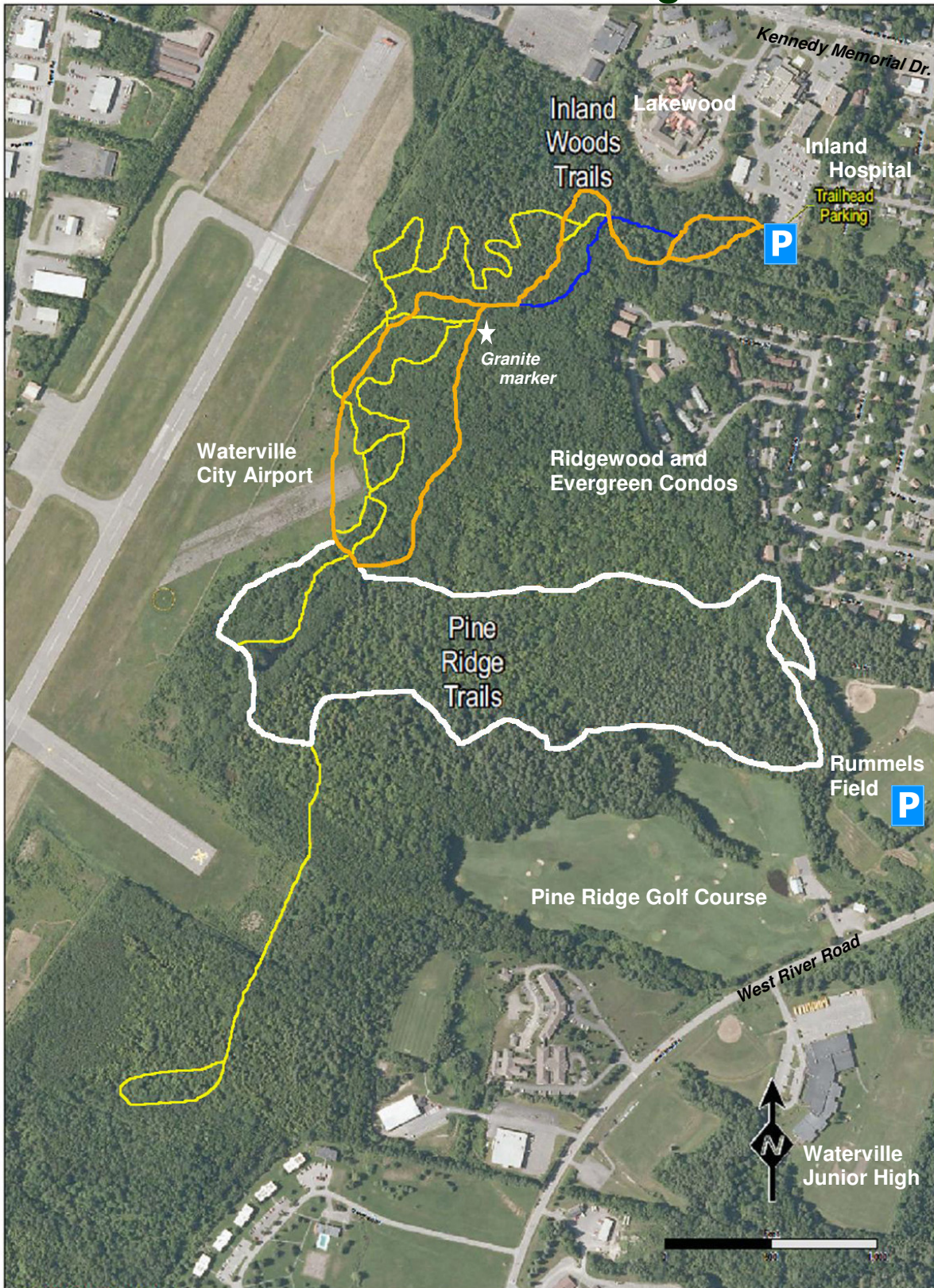


Inland Woods and Pine Ridge Trails



LEGEND

- Biking Trail
- Shared Use Trail
(1.5 mile loop from Inland)
- Walking Only
- Pine Ridge Loop*

Mountain Bike
and Walking
Trail Systems

Pine Ridge and
Inland Woods Trails

CeMeNEMBA www.waterville.org
Build it - Bike it!

Inland Woods and Pine Ridge Trails are a work in progress. Please be patient while we work on signage, trail development and improvements. If you would like to learn more or help build the trails please contact: 207-861-3292 or inlandhospital@emh.org.

March, 2011

*Trail improvement project slated for summer, 2011