



## Inland Foot and Ankle



At Inland, our primary  
and specialty care practices,  
and our hospital-based services  
are *here for you* - providing  
personalized, respectful, and skilled care.

### THE EMHS CONNECTION

As a member of EMHS, Inland has access to  
resources and best practices that help us  
provide the highest-quality healthcare. A multitude  
of specialists are available at both Inland Hospital  
and Eastern Maine Medical Center, our system's  
advanced medical care center.

*with you*  
***every step***  
*of the way*



EMHS MEMBER



EMHS MEMBER

25 First Park, Suite D • Oakland, ME • (207) 872-6010

[inlandhospital.org](http://inlandhospital.org)

# Welcome to *Inland Foot and Ankle!*

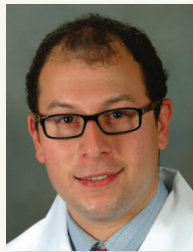


We're here to support you every step of the way with the care you need for healthy feet and ankles. Our providers are board-certified in podiatric surgery by the American Board of Podiatric Surgery, the only two with this credential of excellence in the Kennebec Valley region.

## OUR PROVIDERS:



Richard Samson, DPM  
Podiatrist



Jared Wilkinson, DPM  
Podiatrist

### Treatments for:

- Ankle instability
- Ankle sprains
- Arch pain
- Arthritic disorders/bunions
- Chronic lateral ankle pain
- Congenital & pediatric abnormalities
- Diabetic wound management
- Flat foot deformities
- Foot & ankle fractures
- Fungus toenails
- Heel pain & plantar fasciitis
- Hammertoes
- Ingrown toenails
- Neuromas
- Sports injuries
- Tendon problems
- Warts

### Surgical Treatments:

- Reconstructive surgery of the foot and ankle
- Flat foot reconstruction
- Fusions
- Bunions
- Fracture repair
- Ankle arthroscopy
- Hammertoes
- Neuromas
- Endoscopic procedures for plantar fasciitis